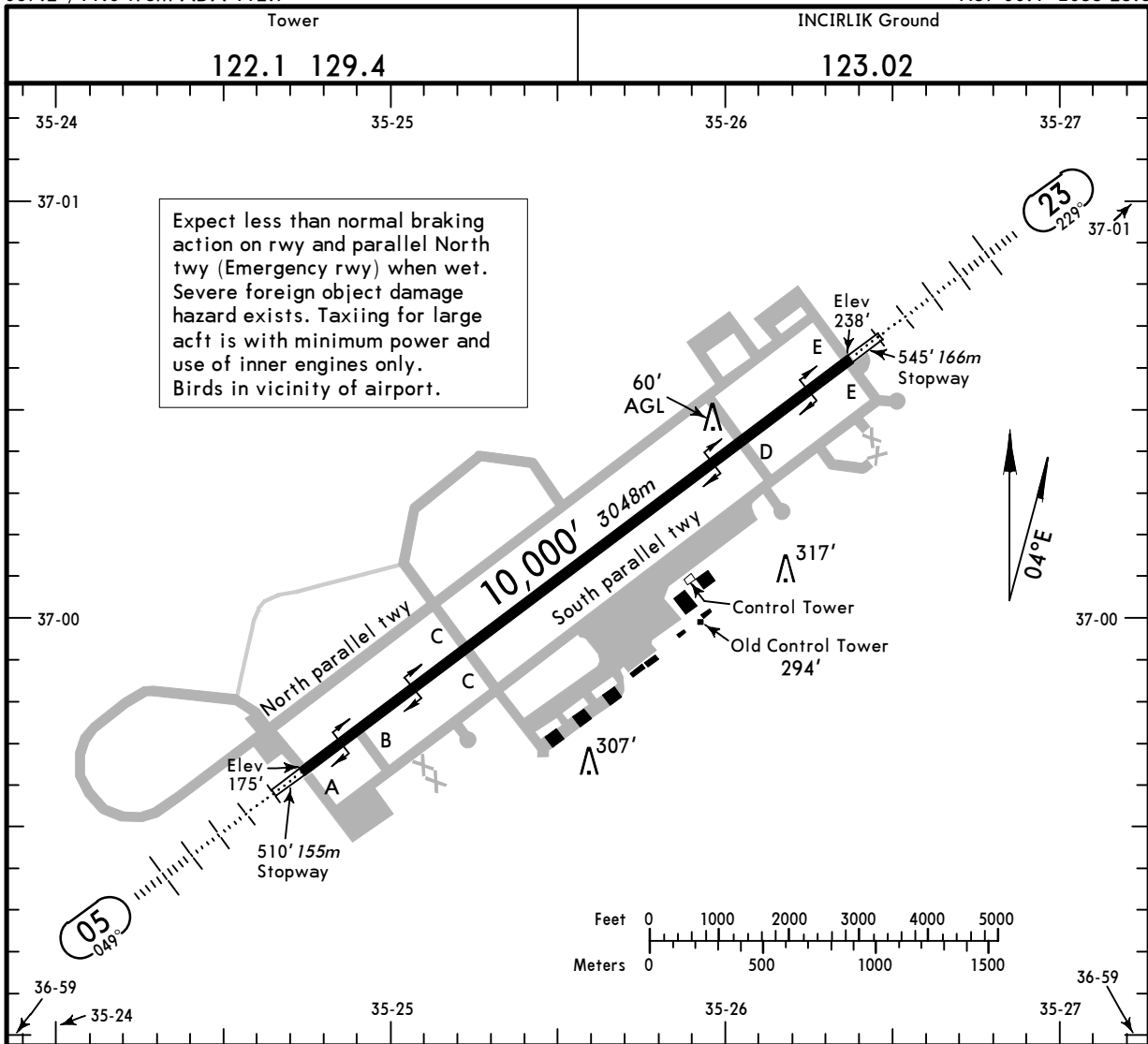


Airport Information

Details for LTAG (UAB) - INCIRLIK AB



City	ADANA
State/Province	
Country	TUR
Latitude	N 37° 00' 07.56"
Longitude	E 35° 25' 33.22"
Elevation	238'
Longest Runway	10000'
Magnetic Variance	E 4.0°
Fuel Type	No fuel is available.
Oxygen	Oxygen facilities are unavailable.
Repair Facility	Repair facilities are unavailable
Landing Fee	Unknown.
Jet Start Unit	A starting unit is available at the airport.
Airport Supports Precision Approach	One or more charts for the airport support precision approaches.
Airport Beacon Light	A beacon light is available.
Airport Customs Facilities	No customs facilities are available
Airport Usage Type	Airport/Heliport is military.
Time Zone Conversion	-2:00=UTC
Daylight Savings	Airport observes daylight savings time
Notams Available	None available



ADDITIONAL RUNWAY INFORMATION

RWY	HIRL	HIALS	SFL	REIL	PAPI	RVR	USABLE LENGTHS		TAKE-OFF	WIDTH
							Threshold	Glide Slope		
05								9234' 2815m		148'
23								8950' 2728m		45m

JAR-OPS		TAKE-OFF 1		
LVP must be in Force		All Rwys		
	RCLM (DAY only) or RL	RCLM (DAY only) or RL	NIL (DAY only)	
A	250m	400m	500m	
B				
C	300m	400m	500m	
D				

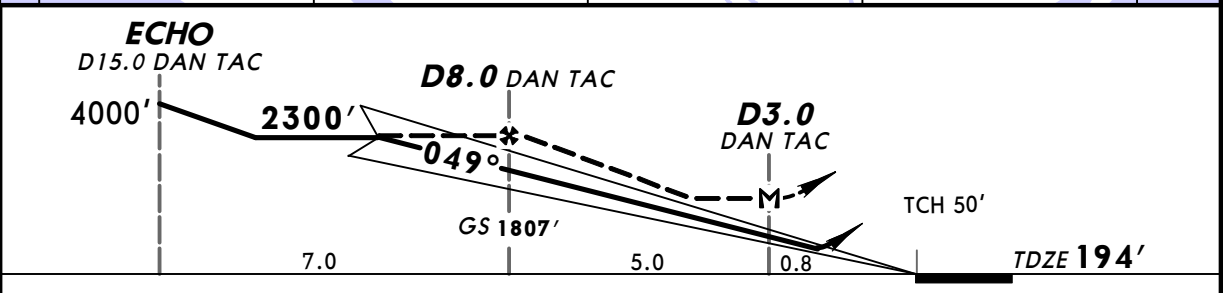
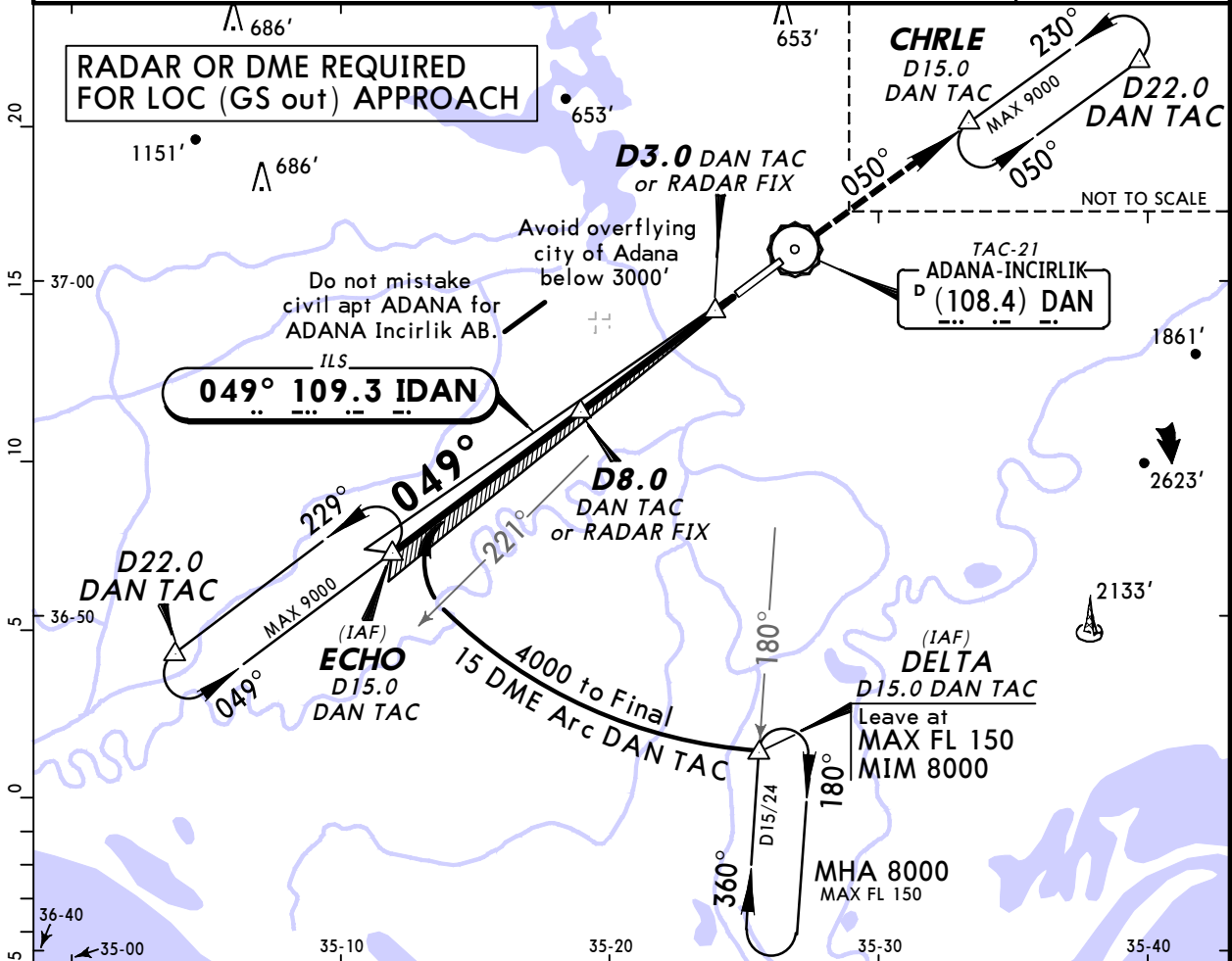
1 Operators applying U.S. Ops Specs: CL required below 300m.

**LTAG/UAB
INCIRLIK AB**

JEPPESEN
15 JUL 05 **(11-1)**

**ADANA, TURKEY
TACAN Azimuth Required ILS Rwy 05**

INCIRLIK Approach (R) 126.5 128.0 134.1			INCIRLIK Tower 122.1 129.4			Ground 123.02		
LOC IDAN 109.3	Final Apch Crs 049°	GS D8.0 DAN TAC 1807' (1613')	ILS DA(H) 394' (200')	Apt Elev 238'	TDZE 194'			
MISSED APCH: Climb STRAIGHT AHEAD on R-050 DAN TAC to CHRLE and hold. Maintain 5000'.								
Alt Set: MB		TDZ Elev: 7 MB		Trans level: FL 110		Trans alt: 10000'		
PAPI and descent angle not coincidental.						MSA DAN TAC		



Gnd speed-Kts	70	90	100	120	140	160		5000' ↑ on 108.4 R-050	CHRLE HOLDING	
ILS GS	2.50°	315	405	450	539	629				719
MAP at D3.0 DAN TAC										

JAR-OPS		STRAIGHT-IN LANDING RWY 05		CEILING REQUIRED		CIRCLE-TO-LAND Not authorized North of rwy	
ILS DA(H) 394' (200')		LOC (GS out) MDA(H) 520' (326')					
FULL		ALS out		ALS out		Max Kts MDA(H) CEIL-VIS	
A			300'- 900m	300'- 1600m	90	680' (442')	500'- 1600m
B			300'- 1000m	300'- 1600m	120	740' (502')	500'- 1600m
C	200'- 800m	200'- 1200m	300'- 1200m	300'- 1800m	140	840' (602')	500'- 2400m
D			300'- 1400m	300'- 2000m	165	940' (702')	600'- 3600m

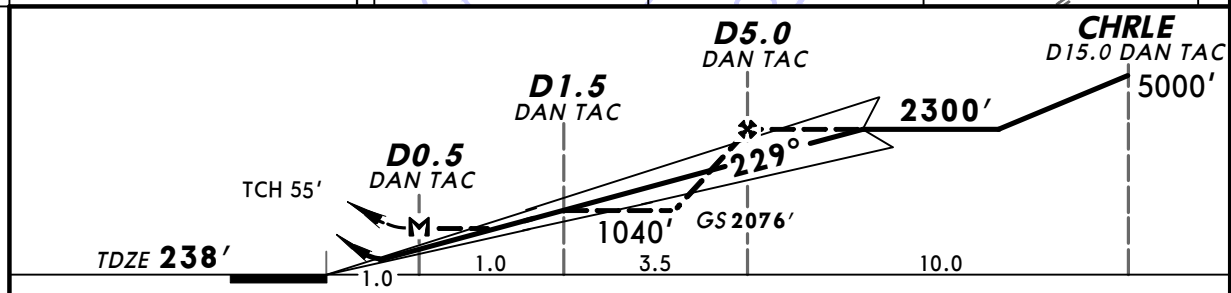
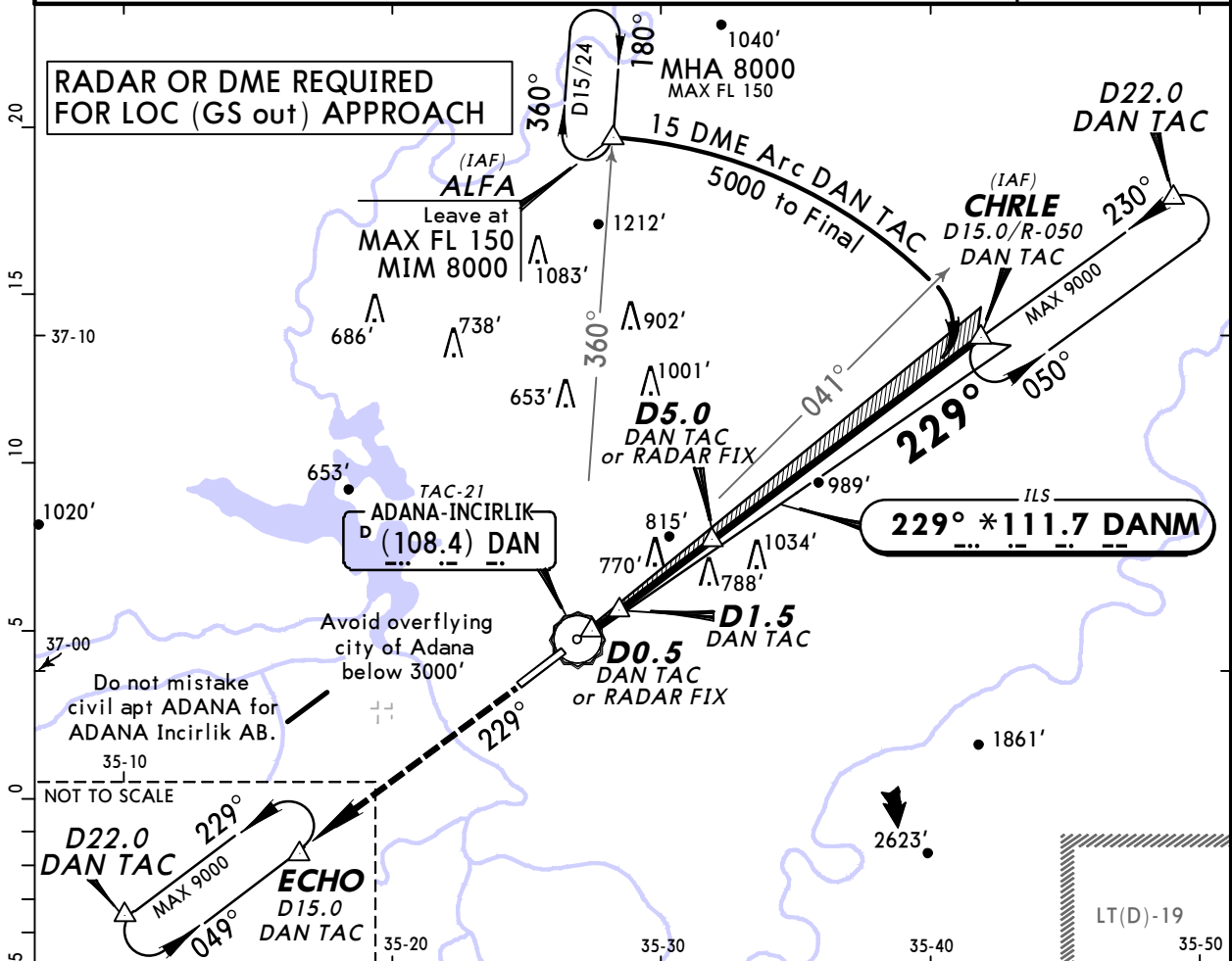
CHANGES: Trans level & alt. © JEPPESEN SANDERSON, INC., 2001, 2005. ALL RIGHTS RESERVED.

LTAG/UAB
INCIRLIK AB

JEPPESEN
15 JUL 05 **(11-2)**

ADANA, TURKEY
TACAN Azimuth Required **ILS Rwy 23**

INCIRLIK Approach (R) 126.5 128.0 134.1		INCIRLIK Tower 122.1 129.4		Ground 123.02
LOC DANM *111.7	Final Apch Crs 229°	GS D5.0 DAN TAC 2076' (1838')	ILS DA(H) 438' (200')	Apt Elev 238' TDZE 238'
MISSED APCH: Climb STRAIGHT AHEAD on R-229 DAN TAC to 4000' to ECHO and hold.				<p>MSA DAN TAC</p>
Alt Set: MB		TDZ Elev: 9 MB	Trans level: FL 110	



Gnd speed-Kts	70	90	100	120	140	160	
ILS GS	3.00°	377	484	538	646	861	
MAP at D0.5 DAN TAC							

JAR-OPS		STRAIGHT-IN LANDING RWY 23		CEILING REQUIRED		CIRCLE-TO-LAND Not authorized North of rwy	
ILS DA(H) 438' (200')		LOC (GS out) MDA(H) 700' (462')					
FULL		ALS out		ALS out		Max Kts	
A						90	720' (482') 500'-2000m
B						120	740' (502') 500'-2000m
C	200'-800m	200'-1200m	500'-1200m	500'-2000m		140	840' (602') 500'-2400m
D			500'-1600m	500'-2400m		165	940' (702') 600'-3600m

CHANGES: Trans level & alt. © JEPPESEN SANDERSON, INC., 2001, 2005. ALL RIGHTS RESERVED.